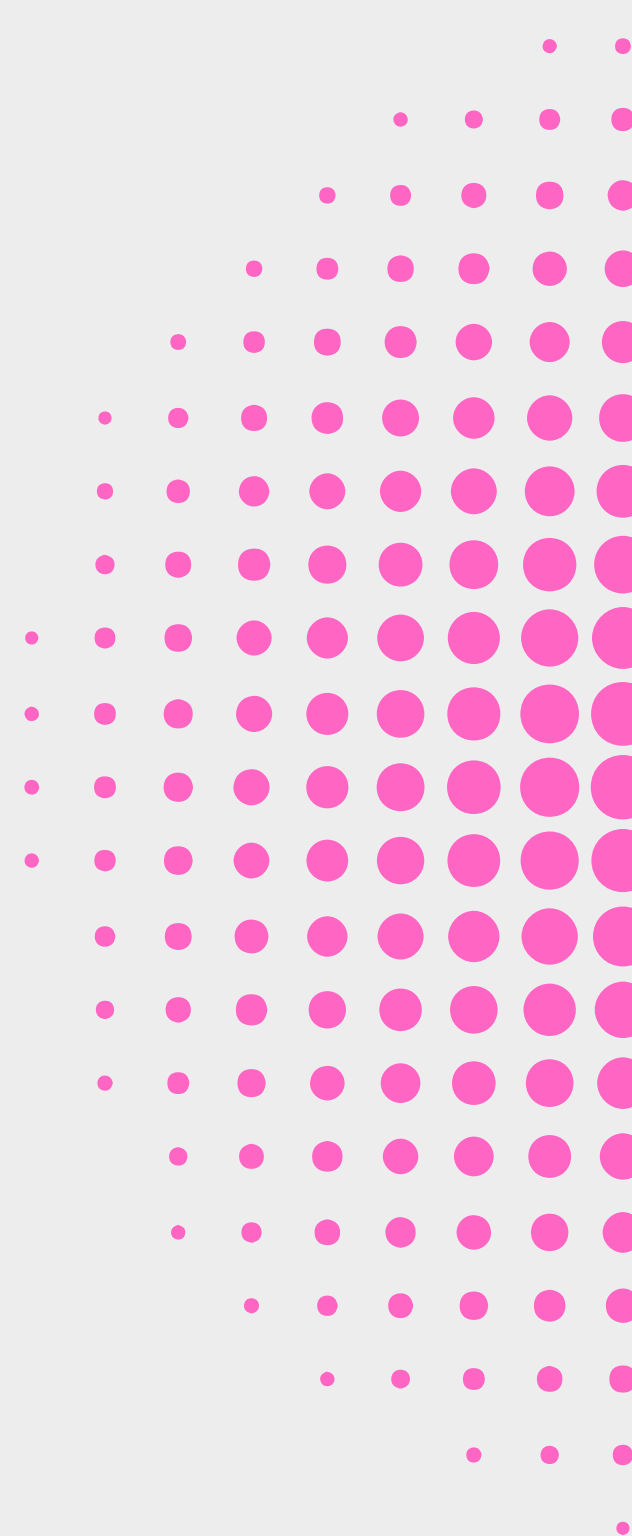


# **WI-FI EDUROAM GUIDE**

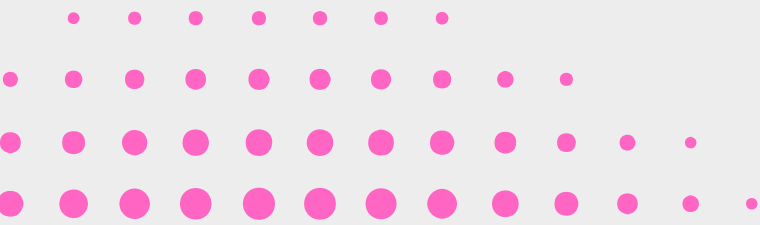


# Wi-Fi Eduroam

## What is it?

Eduroam (education roaming) is a secure wireless access service developed for the international education and research community.

The initiative allows students, researchers and teams from participating institutions to obtain Internet connectivity, via wireless connection (wi-fi), within their campuses and in any location that offers this facility as a service provider.

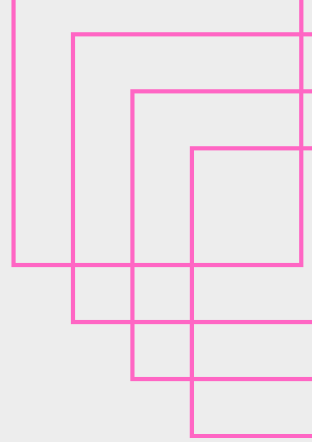
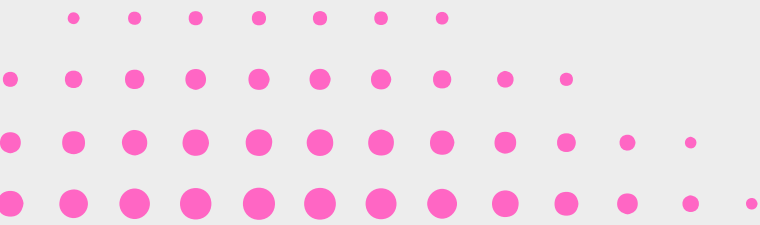


# Wi-Fi Eduroam

## How to use it?

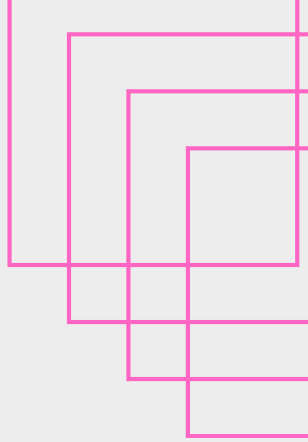
If you already use eduroam Wi-Fi at your home institution, then your login and password will remain the same.

Otherwise, see the instructions on the next pages



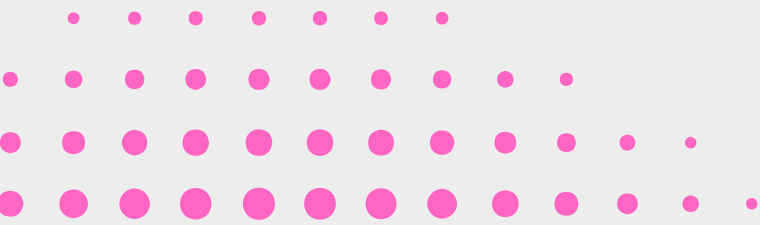
# Wi-Fi Eduroam

## How to use it?



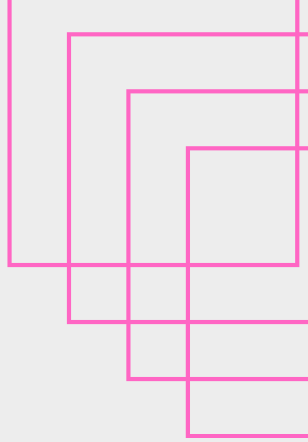
Members of the USP community will be able to use the USP number accompanied by @usp.br to access the “eduroam” wireless network (wi-fi), using the same unique password

It is important to fill in @usp.br in the login field. That is, if your USP number is 123456789, in the login field fill in **123456789@usp.br**



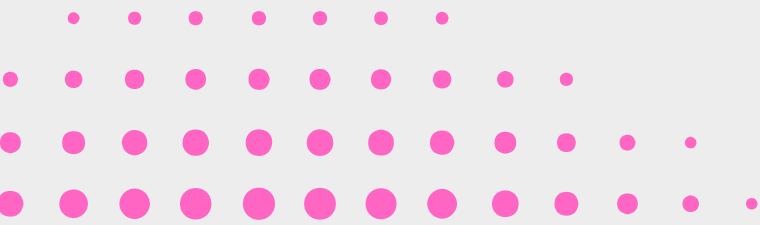
# Wi-Fi Eduroam

## How to use it?



If you have any questions about configuration, installers, among others, see the STI USP information sheet:

<https://eduroam.usp.br/como-usar/>



# Thank You

International Office  
FAUUSP  
[international.fau@usp.br](mailto:international.fau@usp.br)

Designed and created by:  
Ms. Fernanda Samie Shoshi

